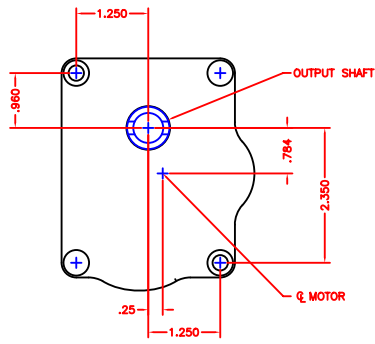
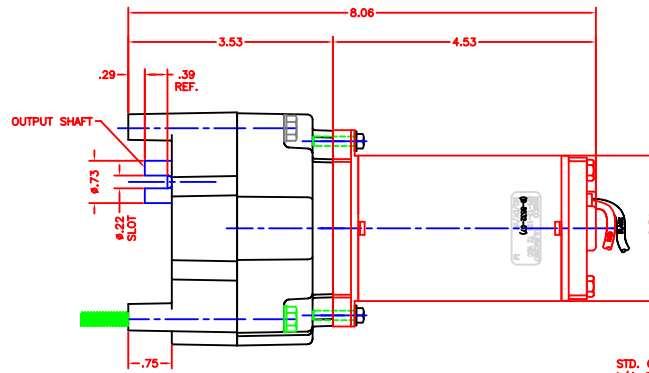


TOP VIEW

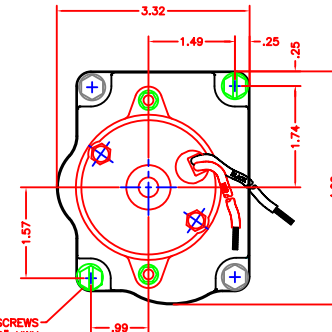


BACK SIDE VIEW
(MOUNTING FACE)



FRONT VIEW

STD. GBX MTC. SCREWS-
1/4-20 X 3 1/2" HWH
(2) SUPPLIED



RIGHT SIDE VIEW

PICTORIAL VIEWS WITH GENERAL
ASSEMBLY & MOUNTING DIMENSIONS

9000 SERIES GEARBOX
35.3 TO 1.0 RATIO
OUTPUT ~ 80 RPM @ 300 in/lbs @ 30 AMPS

12 vdc "IGNITION PROTECTED"
GEARBOX ASSEMBLY ~ POWER KIT
WT. ~ 4 lbs.

REL. ~ DECEMBER 2006	
DATE	VENTURE MFG. CO.
ISS. BY	
REV.	DP-9000
	REV.